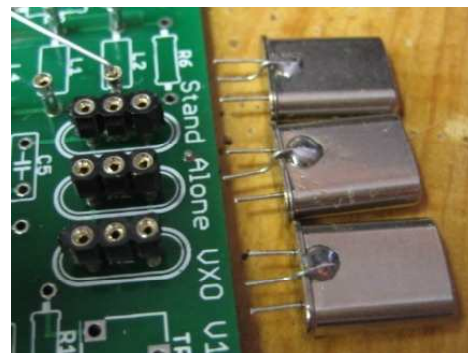


3-pin SIP strip crystal sockets

Holes drilled between crystal mounting pads for modified crystal ground connections

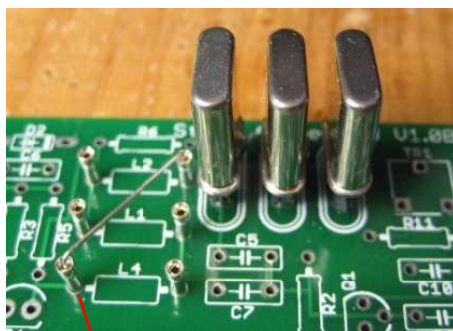


SIP Crystal Sockets and crystals modified with individual ground connections

Crystal ground pad

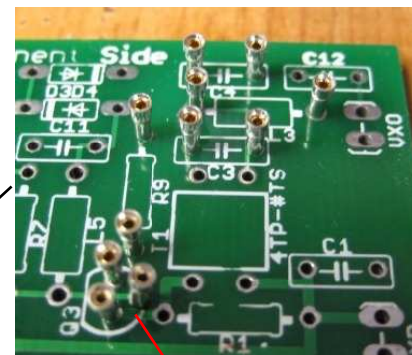


Center socket pins grounded together with part lead



SIP pins installed for inductors used to shift oscillator frequency to desired tuning range

Note: If only one band is intended, the filter pins probably aren't needed.



SIP pins installed for Q3 socket, R9 and for output filter parts for band change

4SQRP SAVXO Band Change Mods